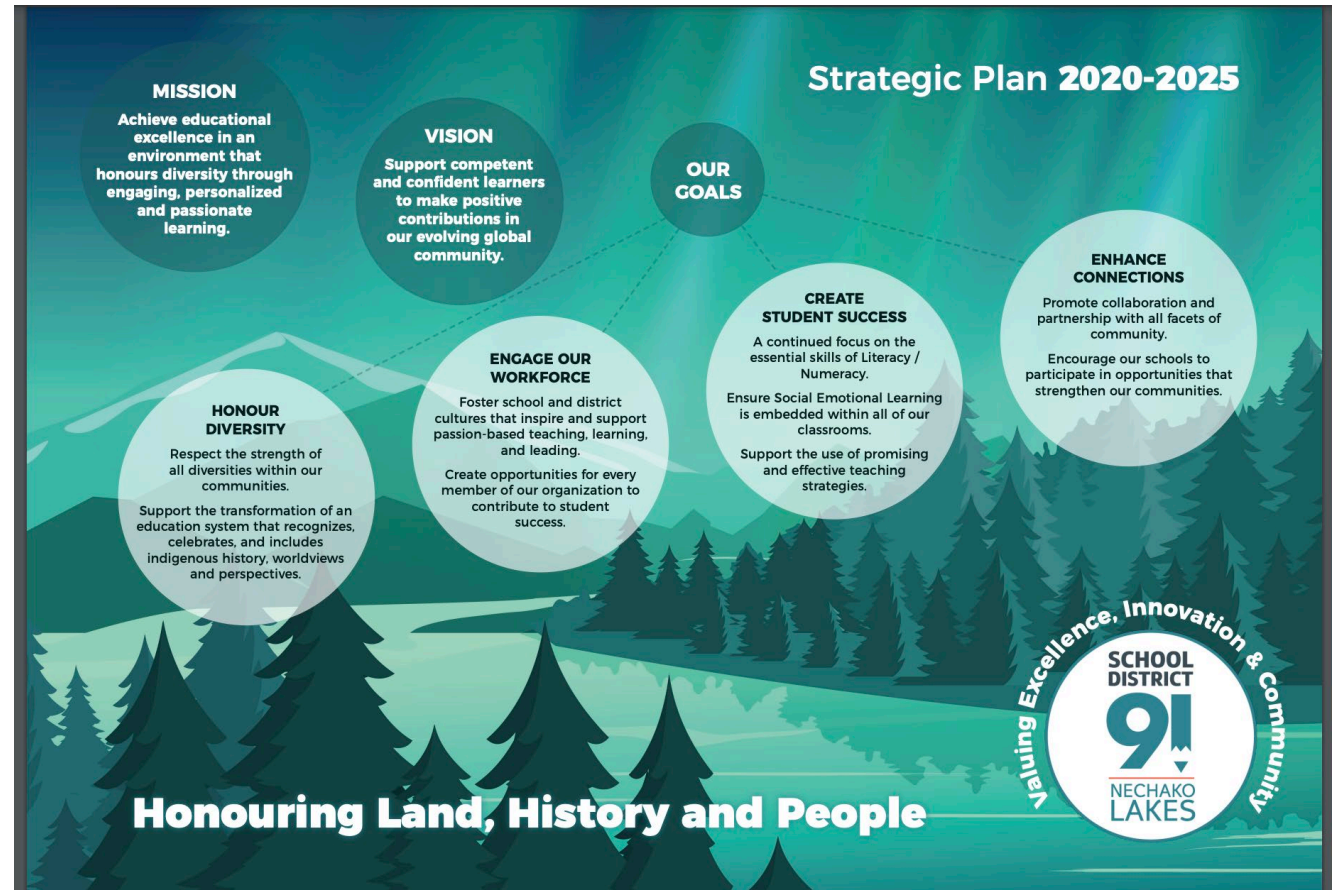




Babine Elementary Secondary School

ENHANCING STUDENT LEARNING PLAN

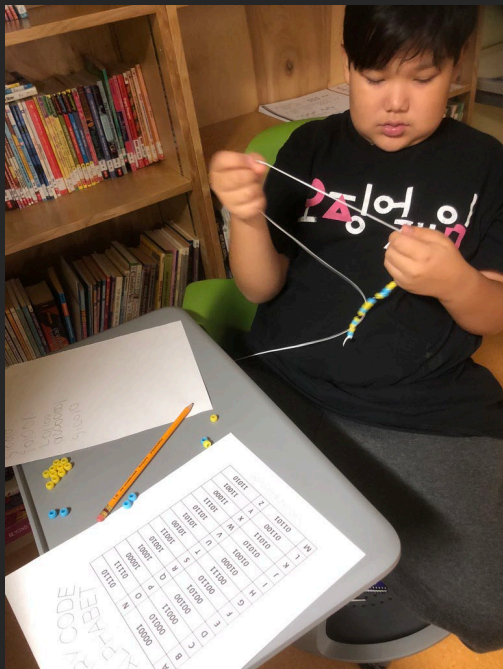
How does B.E.S.S. fit into the District's Strategic Plan?



Where is our place of learning?



With the help of Mike, Leona and Mark, educators, staff, students and community members are working to re-invent our school's culture...shifting from surviving to thriving.

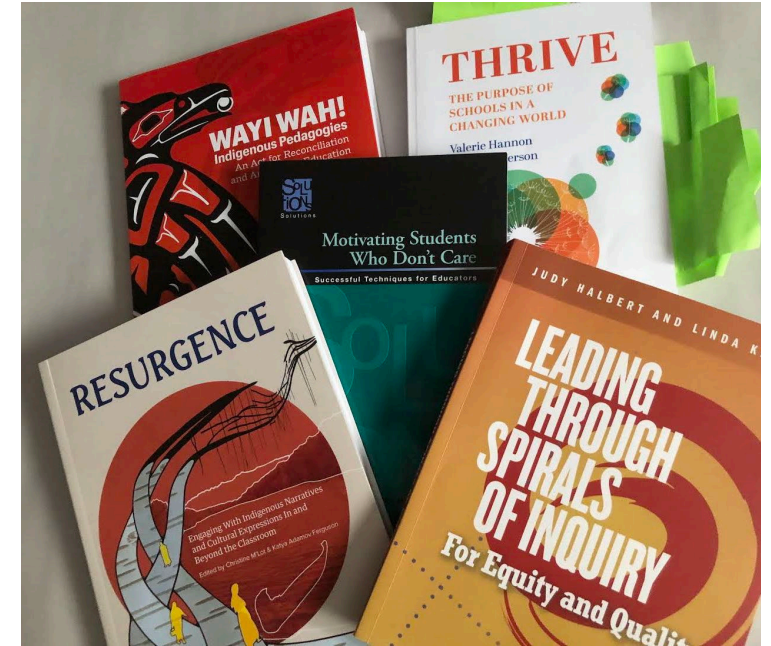
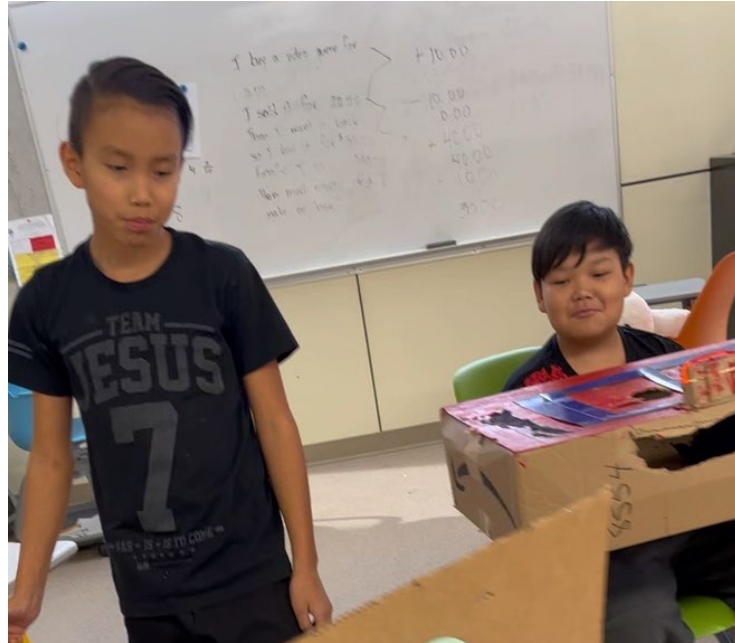




Current Data

We are performing below grade levels in every academic area for which data is gathered – especially numeracy and literacy. Indicators on assessments that students had relationships and a sense of belonging but little motivation to succeed or persevere with learning. We acknowledge that our primary goal was to develop a learning mindset...





Creating Student Success...taking a research-based approach that included everyone's voices

What does success mean for each of us?




A close-up, low-angle shot of tall wooden bookshelves. The shelves are filled with books of various colors and sizes, creating a vibrant display. The wood of the shelves is a light, natural tone.

Literacy –
students wanted
a space to
access books so
we created a
library

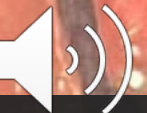


Books were stored in individual classrooms –we used our Love of Reading Grant money and gathered books from individual classrooms to create a library space.



The background of the slide is a close-up photograph of numerous skewers. Each skewer is loaded with alternating pieces of bright red, succulent-looking meat and lighter-colored, possibly marinated vegetables. The skewers are arranged in a dense, slightly overlapping pattern, creating a vibrant and appetizing visual. The lighting highlights the textures of the food, making it look fresh and delicious.

Numeracy—creating a focus
on real life problems





Social Emotional Learning –the heart of our work...

We believe that a 'whole education is one that allows students and adults to enter into learning with all aspects of self being realized.





What does our data tell us?

I Went to Sportchek Yesterday is
winter! Green We got on the bus
2 HOURS me and bethany Sit and we
tims the hot Coco We got bak to the bus
Then We got to the School.

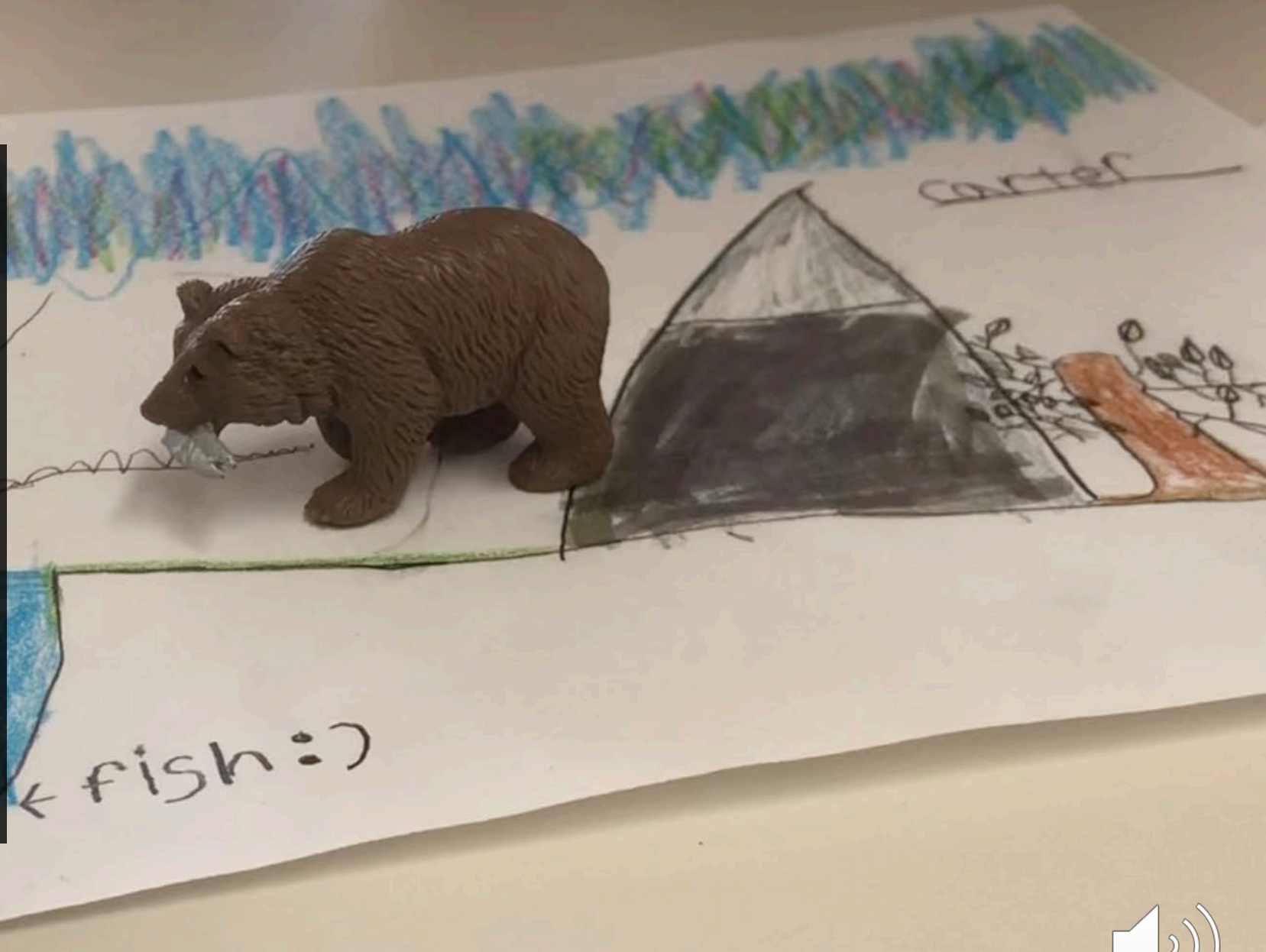
Gr. 4 writing sample

- very few students are at grade level in any subject area
- an early in the year focus on social-emotional learning has developed relationships and an increasing interest in academic achievement
- parents are indicating a greater satisfaction with the school's direction and purpose



Honoring Diversity...in all its forms...

USING PLACE,
RELATIONSHIPS,
CULTURE AND
LANGUAGE, IDENTITY
AND UNDERSTANDINGS
OF WHO WE ARE AND
KNOWING THAT WE
HAVE OPTIONS FOR OUR
FUTURES



Enhancing Connections



Engaging our Workforce



Where are we going?

